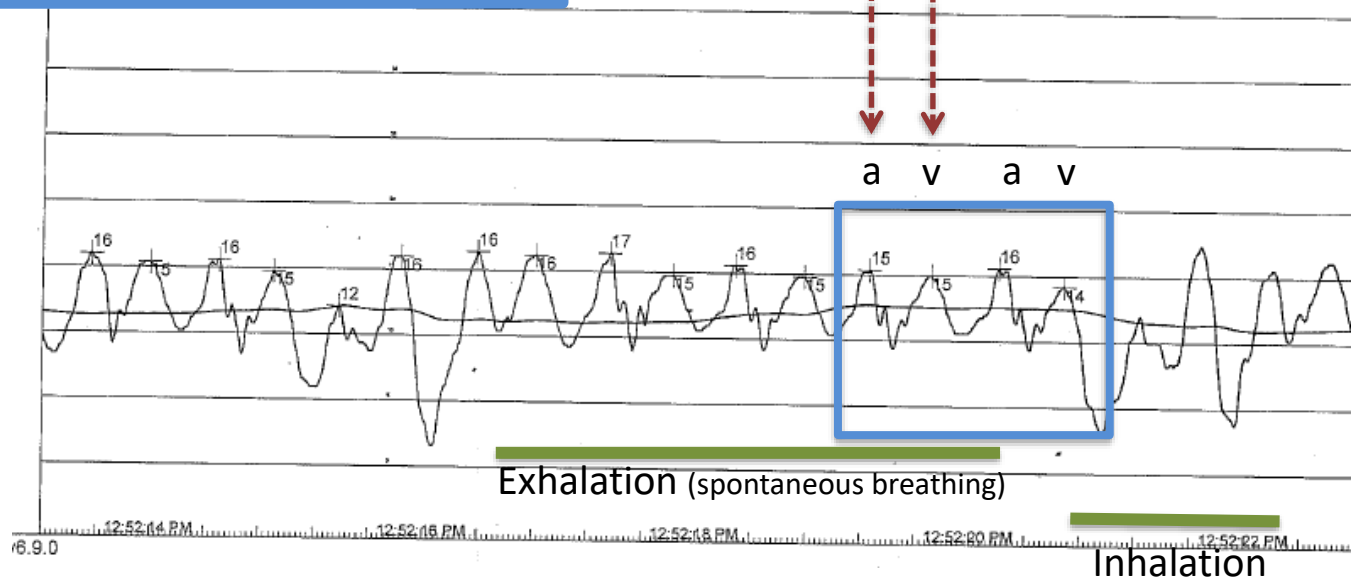
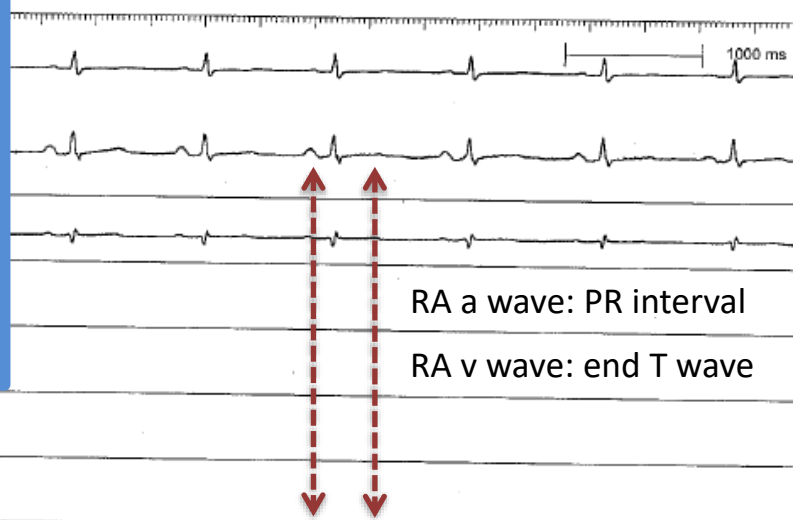
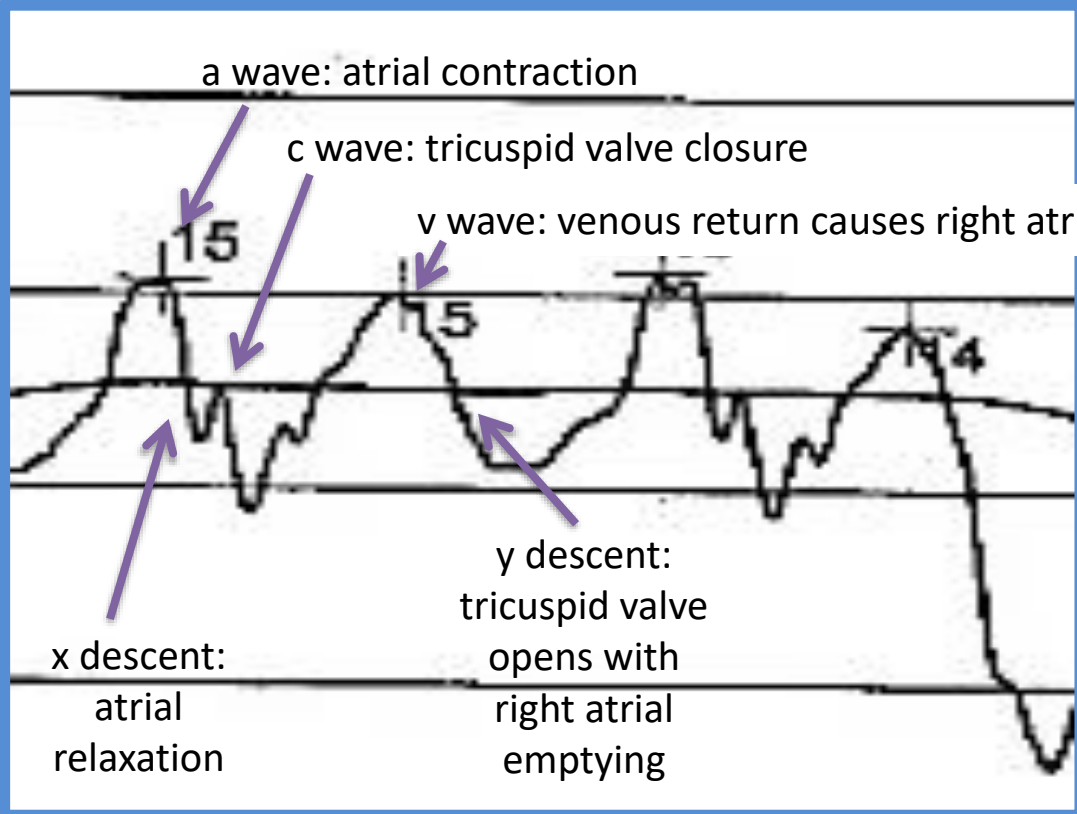
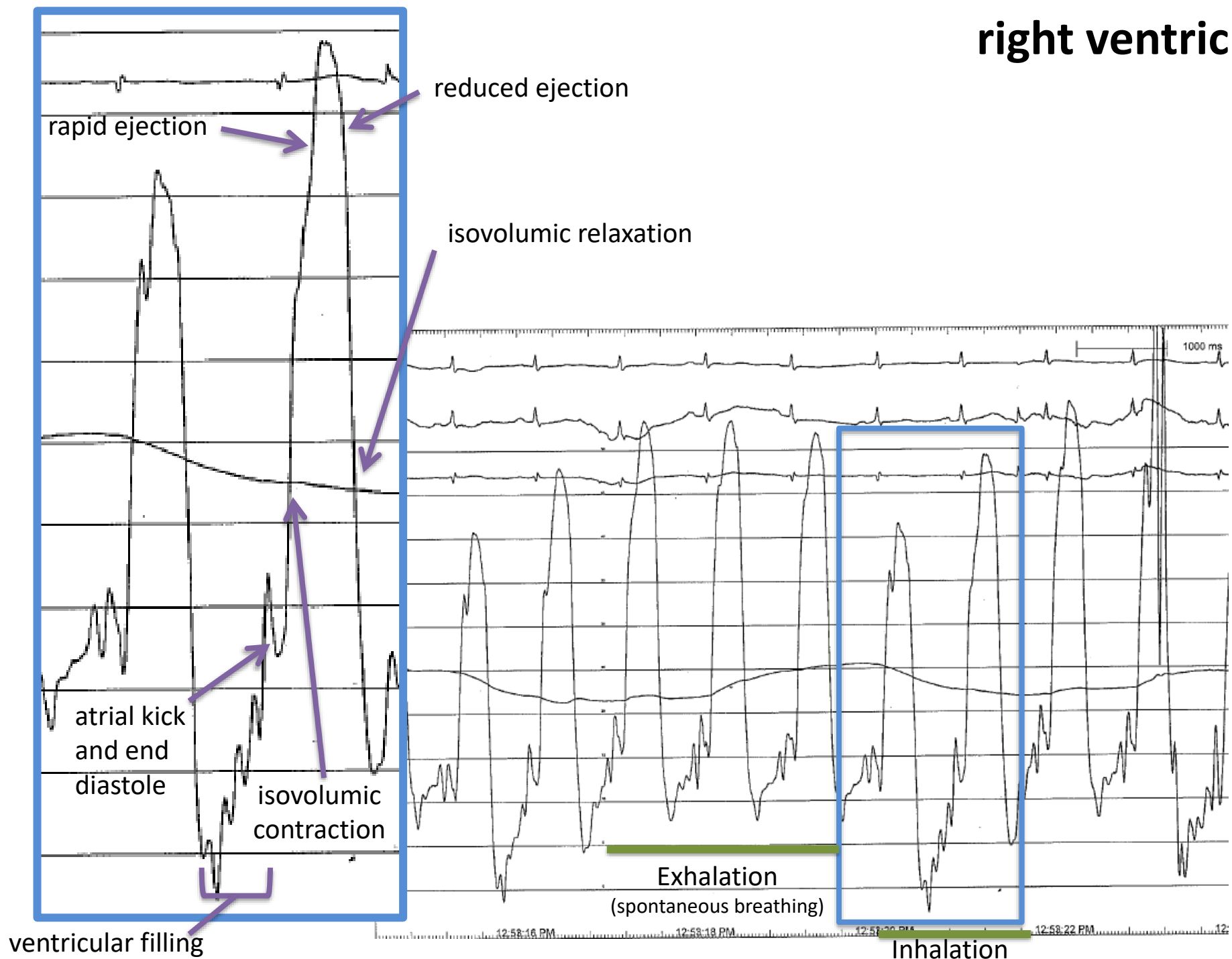


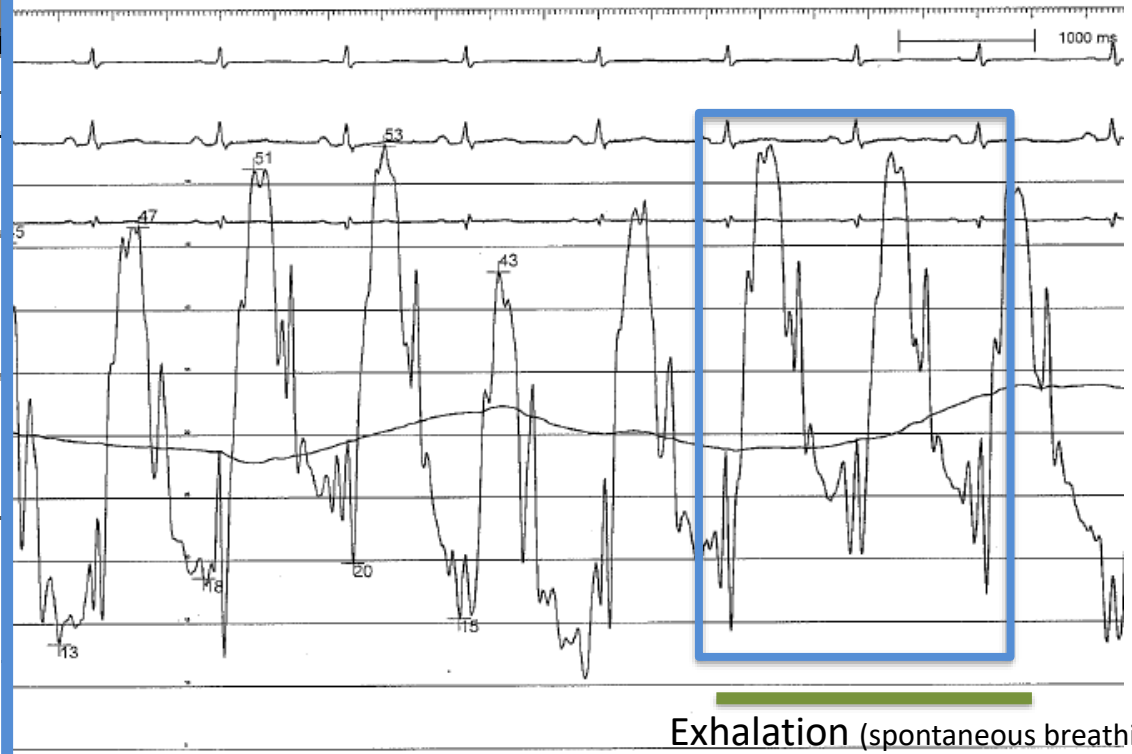
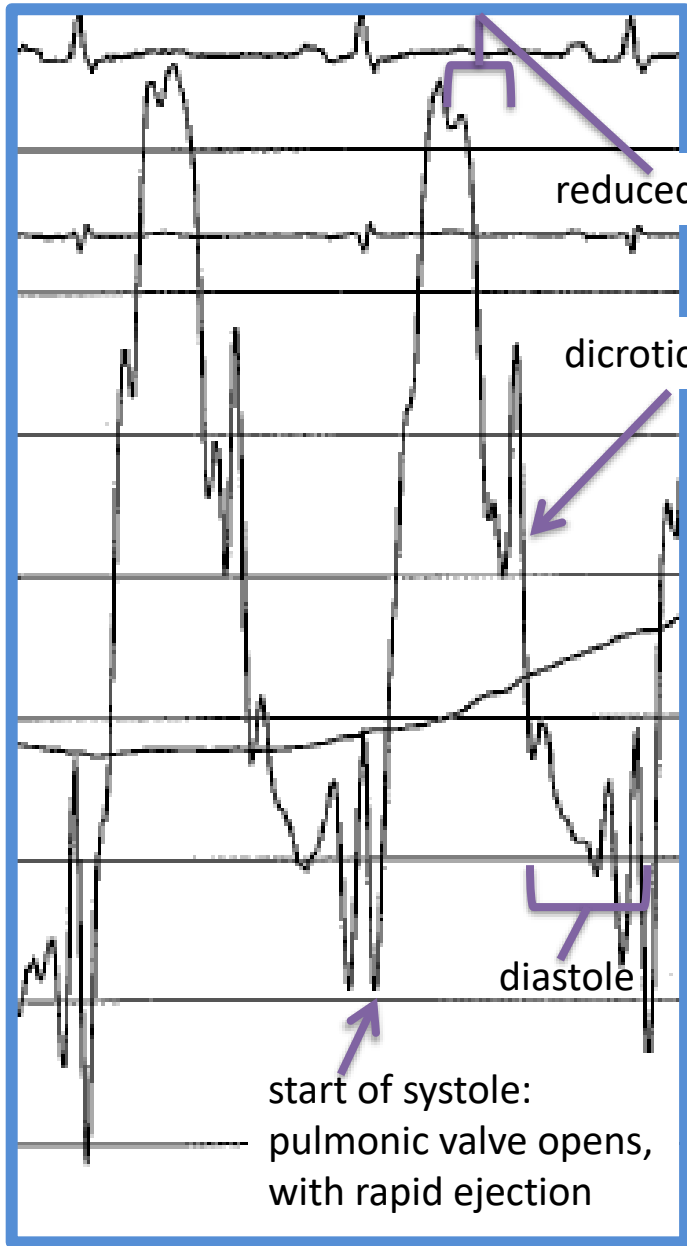
# right atrium



# right ventricle



# pulmonary artery

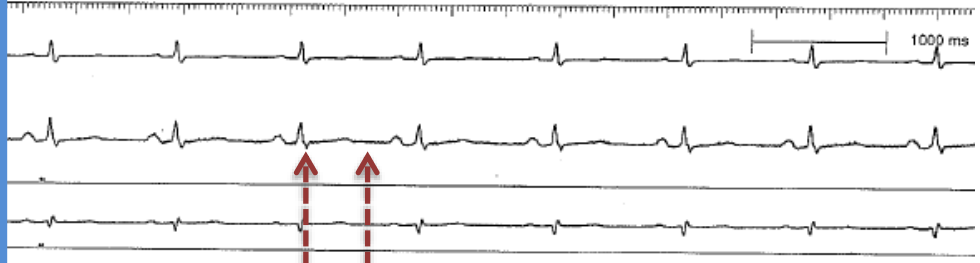
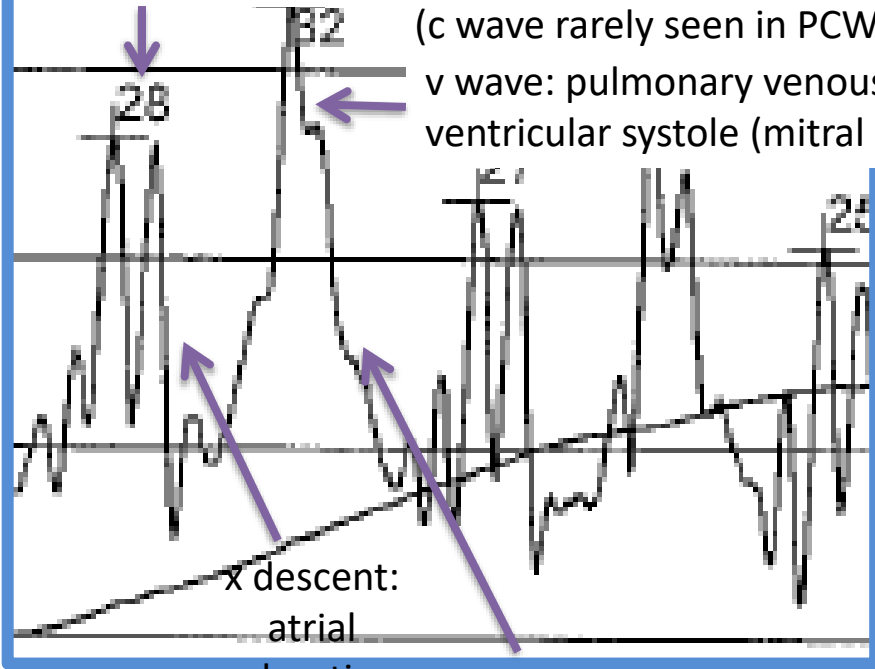


# pulmonary capillary wedge

a wave: atrial contraction

(c wave rarely seen in PCW tracing)

v wave: pulmonary venous return causes left atrial filling during ventricular systole (mitral regurgitation can also contribute)



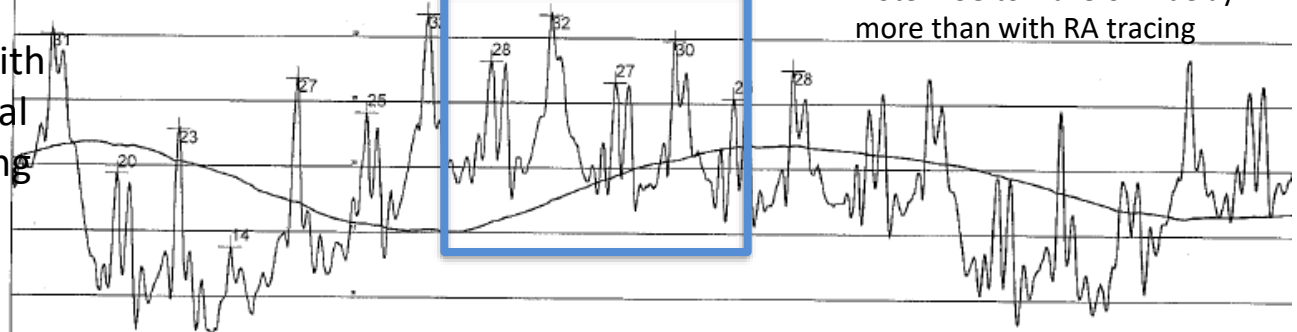
PCW a wave: QRS

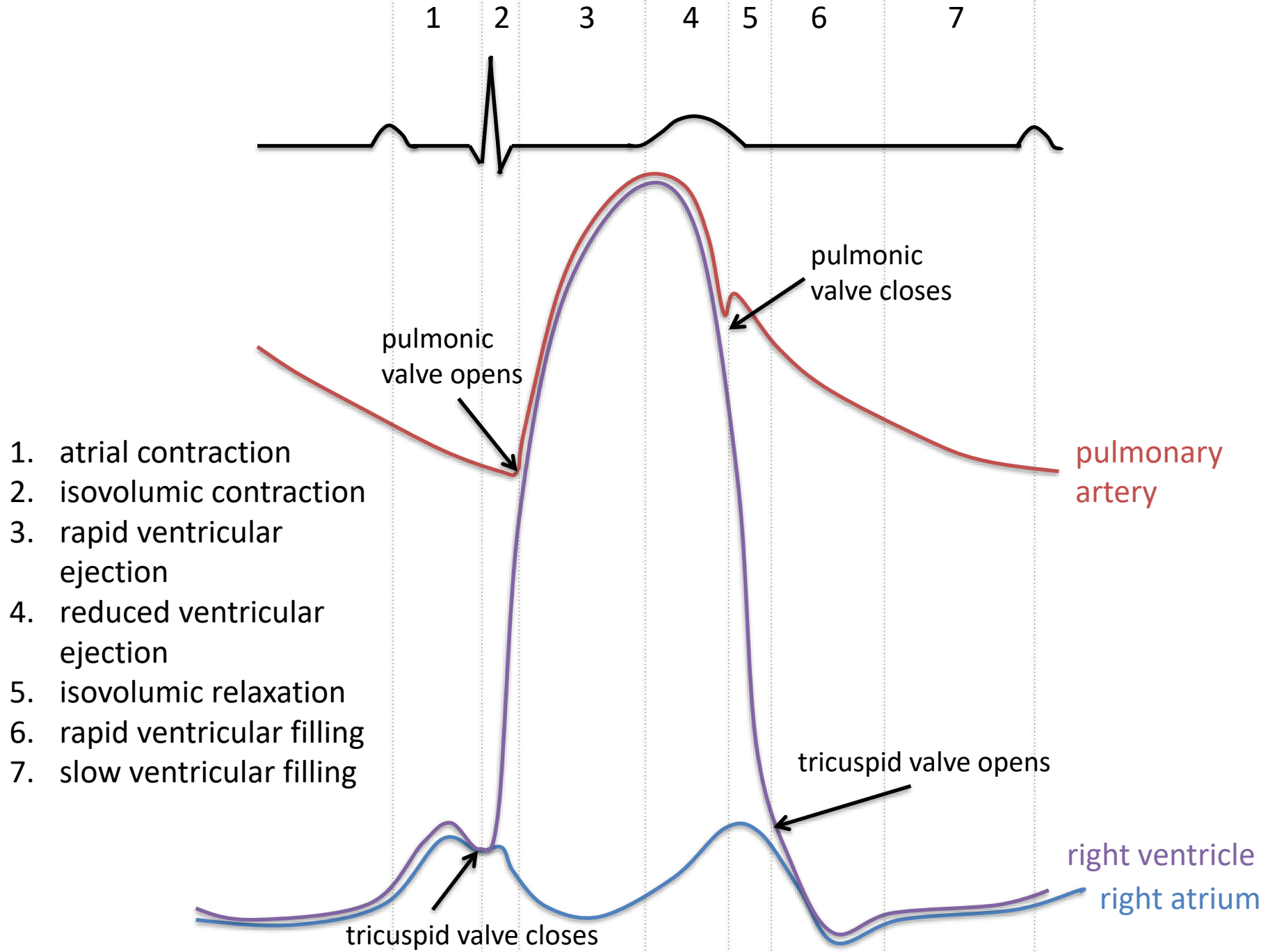
PCW v wave: after T wave

a v a v

Note: ECG to waveform delay more than with RA tracing

mitral valve opens with left atrial emptying





1. atrial contraction
2. isovolumic contraction
3. rapid ventricular ejection
4. reduced ventricular ejection
5. isovolumic relaxation
6. rapid ventricular filling
7. slow ventricular filling

pulmonary artery

right ventricle  
right atrium

1000 ms

16 15 16 15 12 16 16 17 15 16 15 15 16 14

12:52:14 PM 12:52:16 PM 12:52:18 PM 12:52:20 PM 12:52:22 PM

